



DESKTOP AUTHORITY®

Desktop Authority®, the industry's leading desktop management tool for Windows-based networks, significantly reduces the total cost of desktop and application ownership by enabling enterprises to proactively secure, manage, inventory and support desktops from a central location. Real-time Spyware Removal, enhanced Patch Management and USB and Port Security options now secure desktops against an even wider range of threats.

The highest cost in Windows desktop ownership is not the hardware or software, but the time IT administrators spend on support and maintenance. They face endless demands for configuration changes: application updates to install, printers to connect, e-mail profiles to create, patches to apply and spyware to remove! In addition, there is the risk of data theft and intrusion by hackers because the users' desktops are not secured.

COMPLETE DESKTOP CONFIGURATION

Desktop Authority gives enterprises the power to centrally configure, manage, secure and protect desktops from a single, easy to use interface, and removes the need to visit desktop computers.

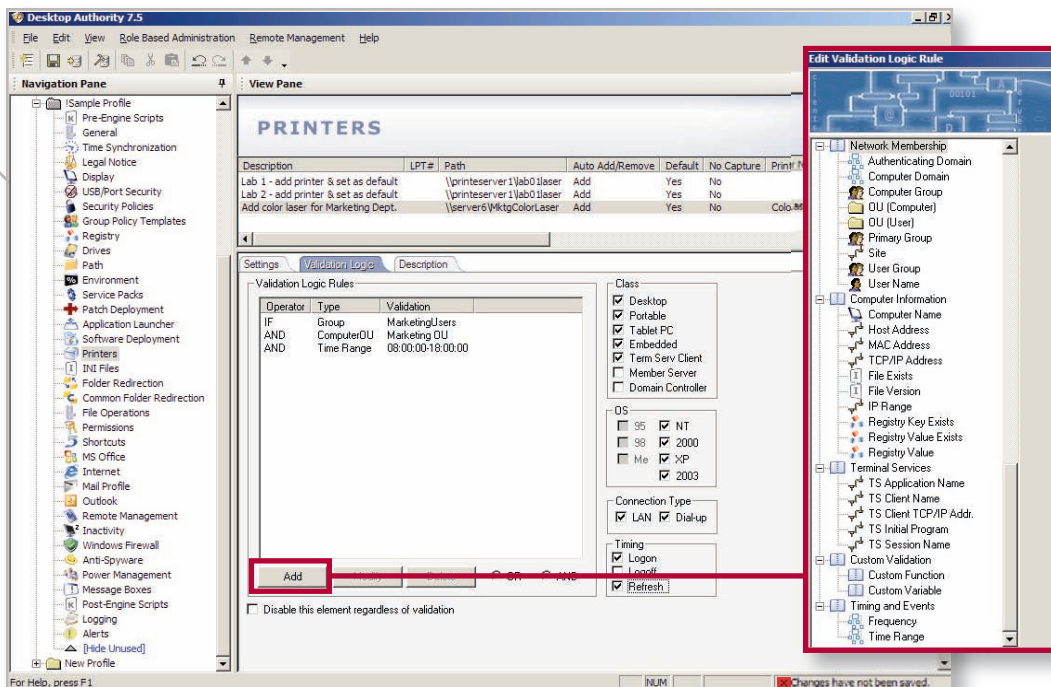
Desktop Authority provides the administrator with a complete set of desktop configuration features for windows clients from 95 to XP, including:

- Application Installs and Updates
- Remote Control
- Patch Management
- Anti-Spyware
- Lockdown USB and other ports
- Windows Firewall (XP SP2+)
- Power Management
- Connections to File Servers
- Add and Remove Printers
- Manage Shortcuts
- Manage Outlook Profiles
- Microsoft Office Preferences
- Registry and Permissions Management
- Desktop File Management

GRANULAR CONTROL

Desktop Authority's patented Validation Logic technology determines how each desktop will be configured, using over 25 validation types including the class of computer (e.g. desktop/notebook), operating system, group membership, AD sites, OUs, and registry and file properties. Custom validation types can be added, such as Asset Tags and hardware configuration.

Desktop Authority's intuitive interface with extensive configuration options and Validation Logic settings



KEY BENEFITS

Centralized Management - A single management console allows you to configure, secure, inventory and support desktops and laptops from a central location.

Secure Client Configuration
Standardize and secure desktop consistently across Windows versions from 95 to XP.

Lower Total Cost of Ownership
Automating and centralizing desktop configuration tasks reduces the hidden costs of desktop ownership.

KEY FEATURES

IMPROVED! **Comprehensive Configuration**
Configure every aspect of the desktop: printers, applications, file servers, shortcuts, desktop icons, registry settings, policies, Outlook settings and more at logon or logoff, or at frequent intervals throughout the day.

IMPROVED! **Granular Management Selection**
Patented Validation Logic allows granular selection of which users and computers receive each configuration setting, and when!

IMPROVED! **Application Deployment**
Centrally deploy MSI packages. Integrates with Desktop Authority MSI Studio™.

NEW! **USB and Port Security Option**
Control and prevent access to USB and peripheral storage devices.

IMPROVED! **Hardware/Software Inventory**
Hardware and software details for all desktops are collected into a SQL database, where they can be analyzed with pre-built and custom reports.

Power Management
Save energy and reduce costs by establishing power settings. Shut down idle machines even when the user is not logged on.

Remote Management
Clients can be securely managed and remotely controlled from the management console or any Java-enabled web browser.

Vulnerability Protection Options

- Patch Deployment for Desktops - Protect against exploits by patching Microsoft and 3rd party apps.
- Spyware Detection and Removal - Discover and remove Spyware in real-time.

Role Based Administration
Restrict junior and site admins so they can only access the configuration elements and profiles they need.



DESKTOP AUTHORITY™

SOFTWARE DEPLOYMENT

Desktop Authority MSI Studio integrates into the Desktop Authority console to allow MSI™ packages to be centrally created and deployed across the enterprise with ease. Using Desktop Authority's deployment infrastructure, desktops install applications from the closest distribution server.

ROLE-BASED ADMINISTRATION

In larger organizations there are multiple levels of administration, with junior ones assigned to specific geographical locations or restricted administration tasks. Desktop Authority's architecture allows super-users to restrict other administrators to only view, change, and add or delete a limited set of configuration objects. By defining roles and applying those roles to users or groups at the profile level, super-users can ensure that administration of Desktop Authority follows enterprise security boundaries.

EXTENSIVE REPORTING

Desktop Authority configurations are stored in a SQL database, along with desktop inventory data. Built-in and custom reports put vital information at the fingertips of administrators, including reports on hardware and software inventory, user activity, patch deployment and Spyware removal.

SECURITY OPTIONS

Desktop Authority enhances the security of desktops with a Patch Management option, which deploys patches from Microsoft and select 3rd-party vendors, an Anti-Spyware option which detects and removes known Spyware, and a USB and Port Security option that controls read and write access to USB, storage and communication devices on the desktop.

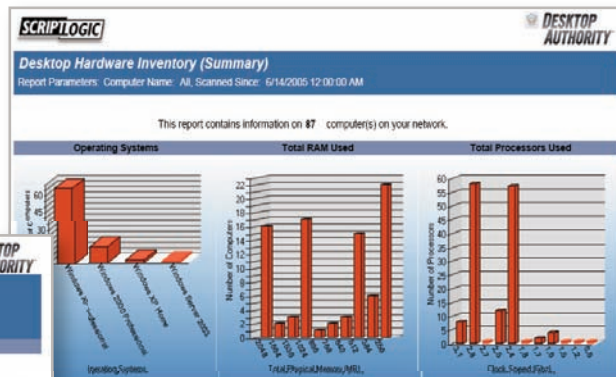
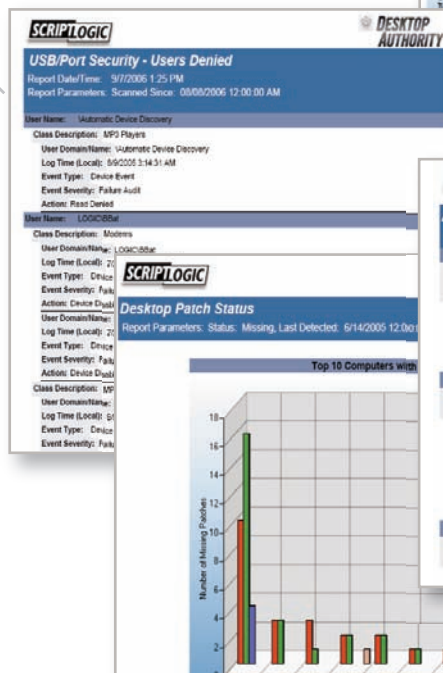
TOTAL REMOTE MANAGEMENT

Ongoing management requires individual desktop, control and access from anywhere. Desktop Authority's remote management and control works from any Java-enabled browser to give administrators the power to manage:

- Services, Processes and Drivers
- File System and the Registry
- Installed Applications
- Open Files, DLLs and Registry Keys
- Tasks and Alerts
- Remote Reboots
- Remote Control

In addition, security levels can be established to restrict access to selected remote management features by different classes of administrator.

Comprehensive Reports includes built-in and custom reporting on Desktop Authority configurations, USB and Port Security, Hardware and Software Inventory, Patch Management and Anti-Spyware.



Anti-Spyware Activity
Report Parameters: Variant Last Action Start Date: 1/1/1900, Variant Last Action End Date: 12/31/2000
Threat Level: ELEVATED

Variant Name	Category	Last Action
WebSearch	SEARCHPAGE	6/3/2005 12:47 PM
ADware	ADWARE	6/3/2005 12:47 PM
Thiefware	THIEFWARE	6/3/2005 12:47 PM

Computer Name	Infection File Name	Infection Path	Action	Result	Action Time
RD-TEST2	class	C:\Sample\Spysware\	QUARANTINE	SUCCESS	6/3/2005 12:47 PM
RD-TEST2	stnteco.exe	C:\Documents and Settings\Administrator\AJAR\CHY\Local Settings\Temp\1\MaareOnD\	QUARANTINE	SUCCESS	6/3/2005 12:47 PM
RD-TEST2	wupost.exe	C:\Documents and Settings\Administrator\AJAR\CHY\Local Settings\Temp\1\MaareOnD\	QUARANTINE	SUCCESS	6/3/2005 12:47 PM

F.A.Q

What's New in Desktop Authority?

Desktop Authority's software deployment capabilities have been enhanced, allowing centralized distribution of packaged applications throughout the enterprise. The new USB and Port Security option is also available to prevent data theft by locking down all ports on the desktop.

How does Desktop Authority lower the desktop total cost of ownership (TCO)?

By proactively configuring every aspect of the desktop, users get a consistent, secure and functional working environment, lowering helpdesk calls, eliminating trips to the desktop and when the need for support arises. In addition, Desktop Authority can remotely control and manage the desktop without user disruption, keeping them productive.

SYSTEM REQUIREMENTS

Installation

Desktop Authority requires installation within an NT/2000/2003 Domain.

Management

Desktop Authority's management console is installed onto a Windows 2000 or 2003 Server and can then be run from any Windows workstation.

Client Support

Desktop Authority supports Windows 9x/ME/NT/2000/XP/2003.

Remote Management

Remote management can be accomplished using any Java-enabled browser supporting 128-bit encrypted SSL.

LICENSING

Desktop Authority is licensed on a **per-seat basis**. The USB and Port Security (UPS) and Patch Distribution and Deployment (PDD) options are licensed separately on a **per-seat basis**.

The Spyware Detection and Removal (SDR) option is licensed separately on an **annual subscription basis**.

For pricing, contact your ScriptLogic reseller or call ScriptLogic at **1.800.813.6415** or **1.561.886.2420**.

Please refer to our web site for international information.