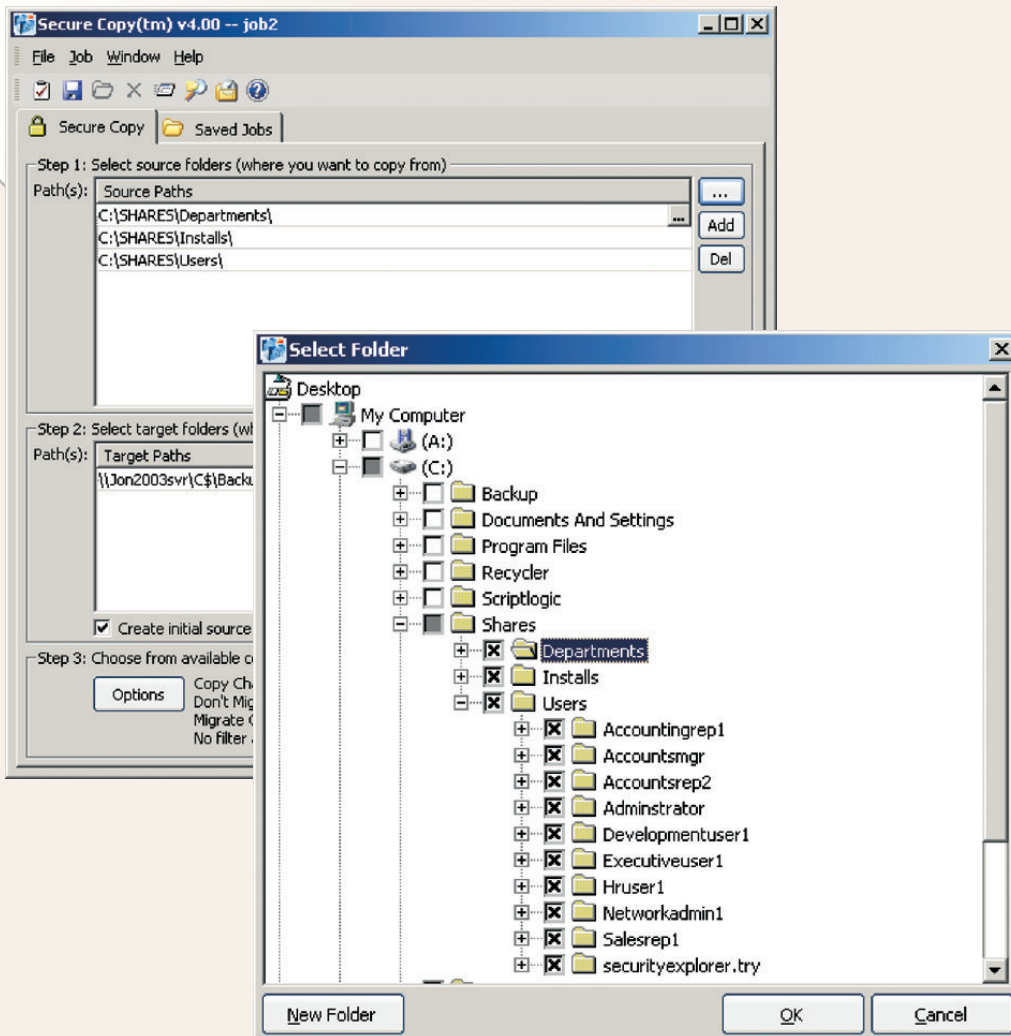


Secure Copy, is a powerful and comprehensive data migration and server consolidation solution, automating the copying of data and supporting security between Windows NT/2000/2003 servers or NAS/SAN systems.

Migrating server data is no longer a simple task of just copying the most recent versions of files and folders to a new server. Security must be maintained, inaccessible files get skipped, shared folders need to be reestablished, and local groups facilitating access need to be recreated. These are just a few of the challenges that administrators must overcome to consider a migration successful.

Secure Copy empowers the administrator by not just automating the copying of files and folders, but by also copying attributes, NTFS security, shares and share security, as well as related local users and groups. Copy concerns involving skipped files because they are locked are avoided through the use of automatic copy retries. Files and folders that the Administrator has no permission to are still copied using our exclusive "Administrator Override" feature. The end result is Secure Copy gives the administrator a comprehensive data migration solution with complete automation.

Simple, powerful interface and extensive options make file server consolidations, migrations and replication fast and painless



KEY BENEFITS

Minimize time to set up new file servers
Perform migrations, consolidations and replications in less time than ever before.

Transparent migration of configurations
File permissions, shares, compression settings, local users and groups, last-modified dates and more are all automatically migrated to the new server.

Reduced manual intervention
Secure Copy automatically overcomes common problems with file ownership, locked files and local users/groups.

Easier project planning
Even complex copy jobs can be scheduled, and incremental copies allow for gradual transition of users to a new file server.

KEY FEATURES

Copy data with file security intact
Rapidly copies file data and recreates permissions on destination server.

NEW! in 4.0 **Multi-threaded Architecture**
Maximize use of network bandwidth when copying lots of small files.

Automatically migrates file shares, compression settings and file dates
Analyzes file and folder properties and recreates settings on destination server.

Migrates local users and groups
Local groups with file permissions on the source server are automatically created on the destination server, Active Directory domain or NT 4.0 domain.

Administrator Override of "Access Denied"
Transparently overcomes problems when the administrator does not have permissions on a file.

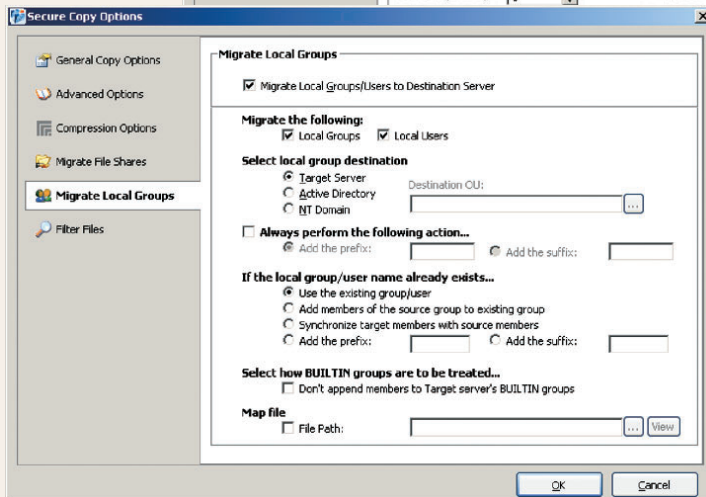
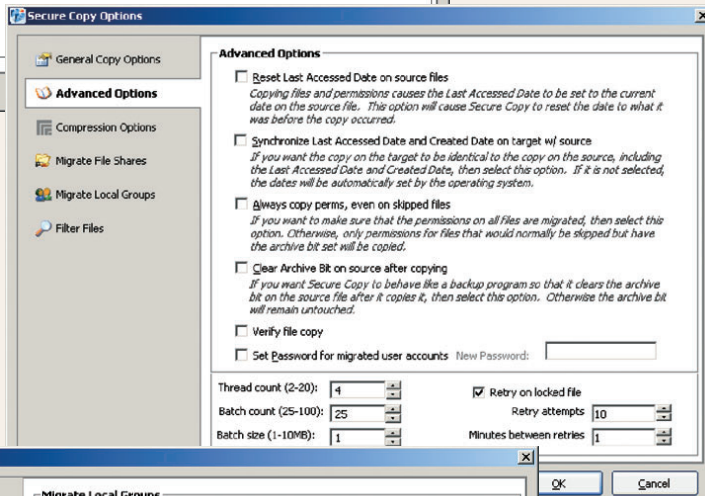
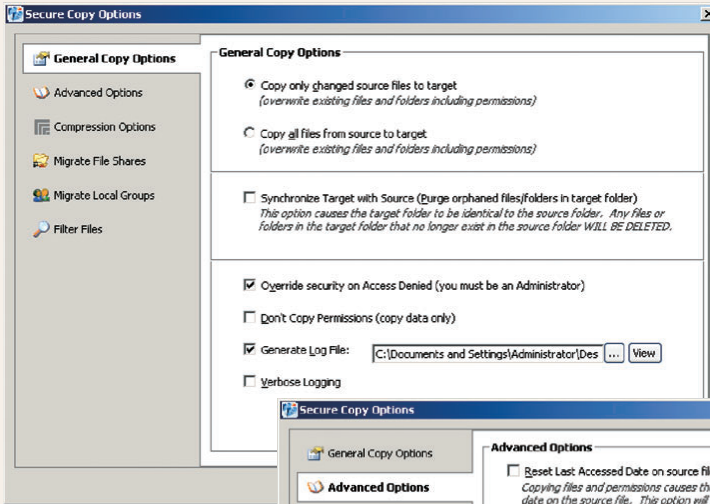
NEW! in 4.0 **Automatic Retry of Failed Files**
Locked files are skipped and automatically retried until they become available.

Full Command Line Support
Everything can be scripted and scheduled from command lines and batch files.



Secure Copy's flexible copy options allow administrators to control nearly every aspect of how data should be migrated. Copy options include:

NTFS Permissions	Shares and Share security	Copy Speed and Efficiency	Synchronization options
Local Users and Groups	File Attributes	Locked File options	File Filters



Secure Copy comprehensively migrates data and related security, while giving administrators maximum control over the copy process.

F.A.Q.

What Operating Systems are supported?

Secure Copy supports NT 4.0 (with Service Pack 6a), Windows 2000 and Windows 2003 Server for source and/or destination servers.

Do I need to install any software agents?

Secure Copy only needs to be installed onto one of the source or destination servers. For maximum performance we recommend that Secure Copy is installed on the destination server.

“Administrator Override” – doesn't that compromise the Windows security model?

No. Secure Copy will not do anything that the administrator running Secure Copy does not already have permission to do. To overcome 'Access Denied' errors the administrator would usually have to take ownership on the problem file(s). Secure Copy transparently eliminates this process, removing the need for such manual intervention.

How are local users and groups migrated from NT 4.0 to Active Directory?

There are 3 options for migrating local groups (see picture on left). When migrating a server into AD, Secure Copy creates domain local groups in Active Directory with the same name as the local group on the source, or with a suffix/prefix.

LICENSING

Secure Copy is licensed on a **named server** basis – each license is permanently assigned to a specific named server. You require 1 license for every source and every destination server.

Secure Copy now has 3 licensing options for different projects:

Server Lifetime	A non-expiring license for data replication
30-Day	For short data migration and consolidation projects
90-Day	For longer migration and consolidation projects