

SECURITY EXPLORER®

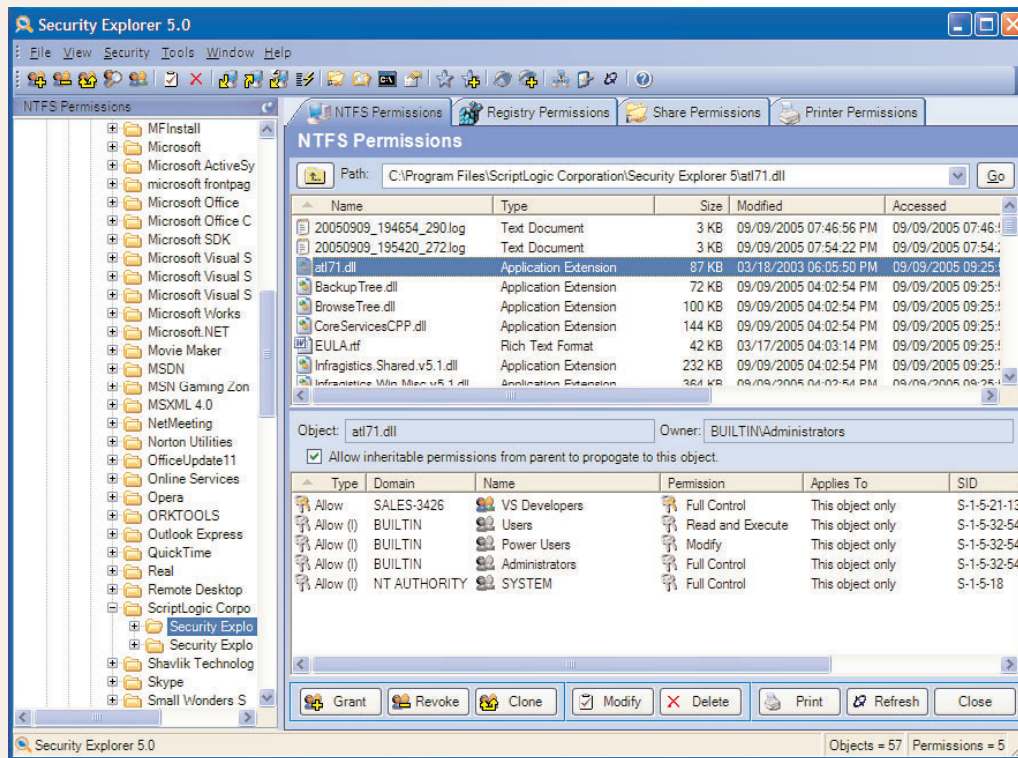
Security Explorer is a powerful and intuitive solution that searches for and modifies Windows NT/2000/XP/2003 security on NTFS volumes, the registry, printers and file shares. Security Explorer increases administrator productivity and provides centralized control, simplifying and standardizing the security of Windows server resources across the enterprise.

Managing the security of Windows servers is a never-ending task, and one of increasing complexity and importance because of growing regulatory compliance requirements and the increasing number of attacks from both inside and outside the corporate network.

The security of Windows file servers is critical, and requires extensive management and analysis of file

permissions. Security Explorer cuts through the complexity of managing NTFS security, filling in the gaps and taking over where Windows' built-in tools leave off. Security Explorer gives administrators the power they need to secure Windows file servers and meet compliance and security goals. Security Explorer also centralizes management of permissions for printers, file shares and the registry.

Security Explorer's security-focused interface cuts through the complexity of managing server security



ASSESS SERVER SECURITY

Using Security Explorer's improved, intuitive interface, permissions are automatically presented as each folder, file, registry key, share or printer is selected. Search and export permissions to find security weaknesses and eliminate over-exposed resources.

ASSIGN PERMISSIONS

Permissions changes can be made individually or in bulk. Automatically overcome "Access Denied" errors

with **Administrator Override**. Clone permissions to a new group or user to update security following domain or NT4 migrations.

AVAILABILITY WITH SECURITY

With the ability to backup and instantly restore security information, servers whose permissions have been unintentionally modified can be returned to a secure, available state with the click of a button.

KEY BENEFITS

Increase Security of Server Resources
Comprehensive permissions management empowers administrators to lock down server resources and eliminate over-exposed files, folders and server resources

Meet Compliance Objectives Faster
Reduce the time needed to implement security standards on Windows servers, recover from out-of-compliance situations and demonstrate security management.

Improve Administrator Productivity
An intuitive, security-focused interface, multi-threading, powerful search capabilities, administrator override and automated permissions management combine to give faster results, a secure environment and increased administrator availability!

KEY FEATURES

Explore Permissions
Move beyond the limitations of Windows' built-in tools! Security Explorer's interface navigates files, folders, registry keys, shares and printers, and instantly shows assigned and inherited permissions. Rapidly manage all NTFS permissions, even on files where the administrator has restricted access

IMPROVED! Powerful, Easy-to-Use Interface
The latest look-and-feel and greater flexibility make Security Explorer's interface even more productive and powerful

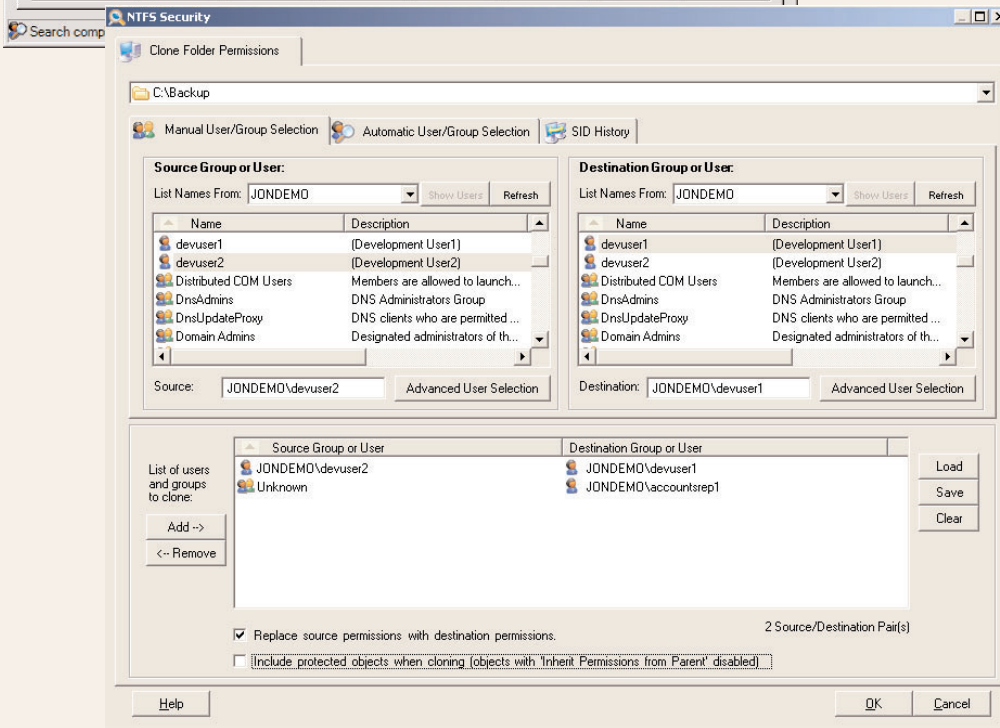
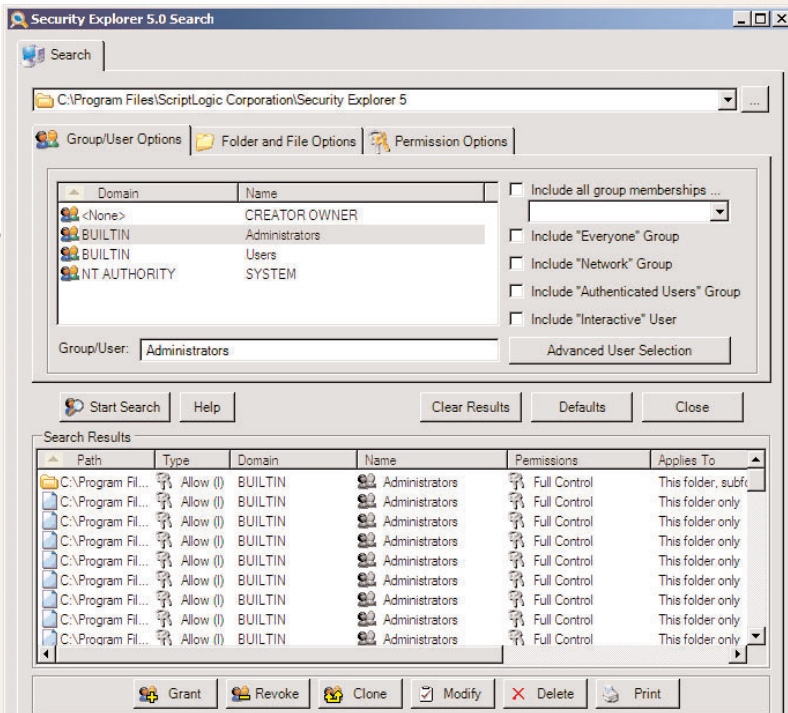
NEW! Multi-Threaded Architecture
Perform multiple tasks simultaneously

IMPROVED! Backup and Restore Permissions
Instant recovery of NTFS permissions to restore security and compliance

IMPROVED! Powerful Search Capabilities
Rapidly scan NTFS volumes for any combination of permissions granted to specific users or groups, inherited or explicit

IMPROVED! Clone and Revoke Permissions
Fix orphaned permissions with automatic removal for unknown accounts. Update file and folder permissions with new SIDs and re-assign permissions following migrations between domains, servers or from NT4

Security Explorer provides the ability to search, grant, revoke, modify and delete permissions with ease



Security Explorer's security-focused interface cuts through the complexity of managing server security

F.A.Q.

Does Security Explorer provide reporting?

Security Explorer can export databases of permissions but does not offer a wide range of formats, analysis or ability to filter and select what to report on. For security reporting in addition to management, consider Enterprise Security Reporter

What is "Administrative Override"?

Administrative Override allows administrators to set NTFS permissions without the dreaded "Access Denied" error that requires multiple steps to overcome.

Does Security Explorer 5.0 help with Compliance?

Yes. Security Explorer gives administrators the ability to implement the security required by compliance standards such as Sarbanes-Oxley, HIPAA, GLBA and ITIL.

How does permissions restore work?

Restoring permissions is as simple as opening a backup file and selecting the file(s), folder(s), printer(s), share(s) or registry key(s) you want to repair.

Is an Evaluation Available?

Yes! A fully-functional 30-day evaluation download is available at scriptlogic.com

SYSTEM REQUIREMENTS

Server Console

Security Explorer can be installed on any Windows 2000/XP/2003-based operating system. Security Explorer requires .NET 1.1 and MDAC

Client Support

Security Explorer can manage the security on any Windows NT/2000/XP/2003-based desktop or server.

LICENSING

Security Explorer licenses are assigned to named servers and prices are based on the number of servers you wish to manage.

For pricing, contact your ScriptLogic reseller or call ScriptLogic at **1.800.813.6415** or **1.561.886.2420**